

Astronaut Name:

Aimee Hsiong

Roles:

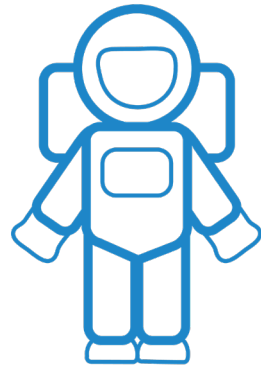
Mission Specialist

Geologist

Hobbies:

Watching Movies

Writing Poetry

**What matters to you most about the new Moon base?**

“Here’s a fun fact: I fell in love with geology after watching a movie about the Moon . . . and now I get to do geology *on* the Moon! I’m so excited! I hope we have lots of good views from the Moon.

Here’s another fact: Dust from the Moon can be a real problem. It sticks to tools and spacesuits. It can clog up drills, scratch spacesuits, overheat electronics, and make it hard to see or breathe. This will make my job of studying the lunar surface quite hard!

I know NASA has been studying some ways to help, like making super-slippery surfaces so dust can’t stick. Other ideas are to use static charges or even sonic waves to shake dust loose from equipment.

I’m really looking forward to the new Moon habitat’s science facilities. How will we study the samples we collect on the Moon’s surface? How will we store them without taking up too much space? And how will we fix the tools that are scratched and broken when we go to collect samples? I can’t wait to find out!”

**Astronaut Name:**

Ruby Torbeck

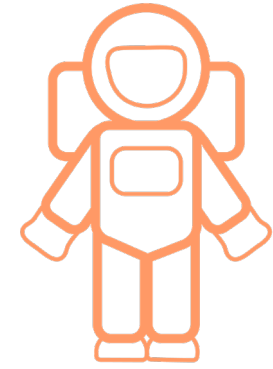
Roles:

Mission Commander

Hobbies:

Fitness

Reading

**What matters to you most about the new Moon base?**

“As the Commander of this mission, safety is on my mind above all. The Moon has several unique dangers we’ll need to plan for.

Too much radiation (energy) from the sun can damage the human body . . . and the Moon doesn’t have the same kind of protection that Earth does. Shielding ourselves will be very important! We could use thick materials like lead, which are heavy and costly to launch, or we could try materials like water or polyethylene, which are lighter but also weaker.

I’m an athlete and I care about our crew’s health too. I’d love to have a place where we can stay fit and healthy in a fun way . . . and that can be a challenge for me. I’m tall at 6 ft (1.8m). Especially considering most of our crew is much shorter than I am! How can I make sure my muscles, heart, and lungs stay in great shape in our new Moon habitat?”



Astronaut Name:

Tomás Alvarez

Roles:

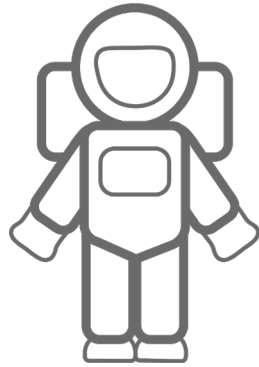
Mission Specialist

Botanist

Hobbies:

Playing Guitar

Cooking

**What matters to you most about the new Moon base?**

“I’m most interested in how the habitat will take care of our basic needs. It’s expensive and tough to launch a lot of materials into space, so I know the base will have to be able to do many things in a small space.

In our personal spaces, where will we sleep? Where can I go to be alone or to play my guitar? What other fun things will we have to do so we don’t get bored?

When eating, where will we store the food we bring with us? Where will we grow food to eat when the supply runs out? Where will we prepare the food? As a chef, I’m hoping we have at least a little bit of kitchen space for preparing real meals. Space food in a plastic bag tastes okay, but I’d miss Earth food quickly!

As far as our personal care, where will we use the restroom and what will we do with the waste? How will we shower in lower gravity?

I’m full of questions, but can’t wait to see the designs that answer them!”

**Astronaut Name:**

Jamar Michaels

Roles:

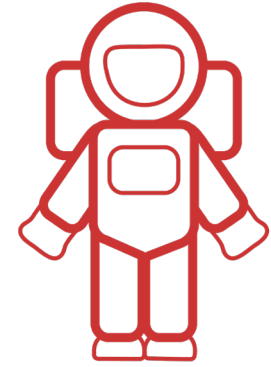
Mission Specialist

Pilot

Hobbies:

Organizing

Painting

**What matters to you most about the new Moon base?**

“I know I said ‘organization’ is one of my hobbies, and it will be important that all of our gear can be stored neatly, but did you know that we can’t even take all of the supplies we’ll need with us?

One of the most important parts about the new Moon habitat will be In Situ Resource Utilization (ISRU). This is a fancy way to say “collecting and reusing materials from our environment.” It could mean:

- turning the sun’s energy into power and storing it,
- mining the Moon’s surface for building materials,
- making water from the ice,
- making fuel from materials on the Moon
- growing our own food, and
- much more!

As a painter, I’m also hoping the inside of the habitat is not too dull! Color can have a big impact on mood. How will we get to make our spaces personal? What if we like to decorate in different ways?”



Astronaut Name:

Pathik Anand

Roles:

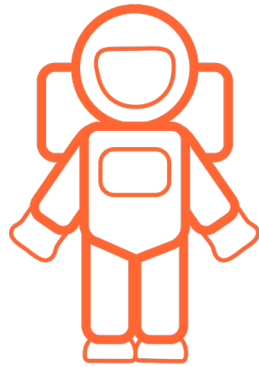
Mission Specialist

Engineer

Hobbies:

Robotics

Fixing Cars

**What matters to you most about the new Moon base?**

“Some of the parts I’m most curious about are parts that don’t even directly involve people!

Did you know this base will eventually need to sustain itself? NASA is designing a Mobile Hab—basically, a tiny base on wheels or a mobile home—that will let our crew go on missions away from the base for a month or two at a time. That means our base will need to be able to survive without us being there. So, how will the moon base monitor power and supplies without a crew? How will it stay clean and safe so that we don’t come home to a mess? How will it keep gathering data and communicating with us and with NASA?

Speaking of communication, that’s another thing I wonder about. I’ll miss my family and I hope there’s a place to send and receive video calls or emails. Will we use antennas to reach Earth? Satellites? Robots? Lasers? Will we get to watch shows from Earth somewhere on the base?

I’m hoping for some good moon movie marathons!”

**Astronaut Name:**

Alessa Romano

Roles:

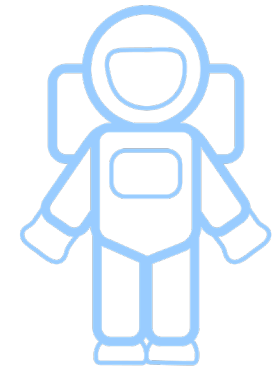
Mission Specialist

Flight Engineer

Hobbies:

Quilting

Speed Skating

**What matters to you most about the new Moon base?**

“I’m so excited to be a part of this crew as the first Deaf astronaut to land on the Moon. I worked very hard to sharpen my skills and senses to get this far.

My partner, Tomás, is actually on this mission as well and is a great help for communicating . . . but the entire crew has learned American Sign Language as part of their training!

I’m very dexterous, have great eyesight, and am very sensitive to vibrations. As you can imagine, a base that I live in cannot rely much on alarms and sounds to tell me if something is wrong or give me directions for a procedure. How will I be awakened in the mornings? How will I receive my instructions or know if there is an emergency situation? How can I communicate with the crew over long distances or when visibility is tough for sign language?

And I don’t need to be “so different” or “more work” than everyone else . . . the solutions that help me are usually helpful to everyone!”

